

**American Refrigeration
Cold Storage & Ice-Making 1875-1915**

*Refrigerating Adverts
Part-2*

J. S. DEHART, JR.,
PRESIDENT

A. F. WEHNER,
SECRETARY

R. K. WEHNER,
TREASURER

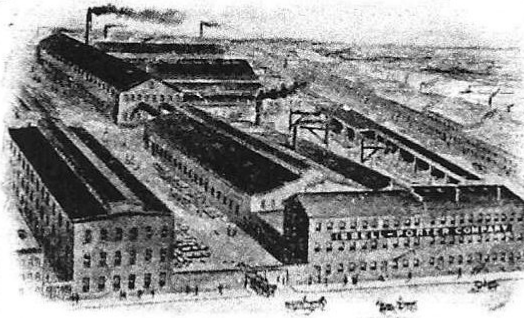
ISBELL-PORTER COMPANY

ENGINEERS AND FOUNDERS

POLAR
ABSORPTION
REFRIGERATING
MACHINES
DESIGNED TO USE
EXHAUST OR LIVE
STEAM
LOW TEMPERATURE
WORK A SPECIALTY

BRINE
COOLERS

PLATE
ICE PLANTS



DESIGNERS
AND
BUILDERS
OF ALL
APPARATUS
FOR
GAS WORKS
REFRIGERATING
AND
ICE MAKING
PLANTS
ETC.

MAIN OFFICE AND WORKS
BRIDGE & OGDEN STREETS
NEWARK, N. J.
ESTABLISHED 1865

Mention COLD STORAGE AND ICE TRADE JOURNAL in writing to advertisers.

From TRADE MAGAZINES 1891-1910

❁ PICTET ❁

Ice Refrigerating Machine

...MANUFACTURED BY...

WHITEHILL ENGINE & PICTET ICE MACHINE CO.

WE DO NOT USE AMMONIA.

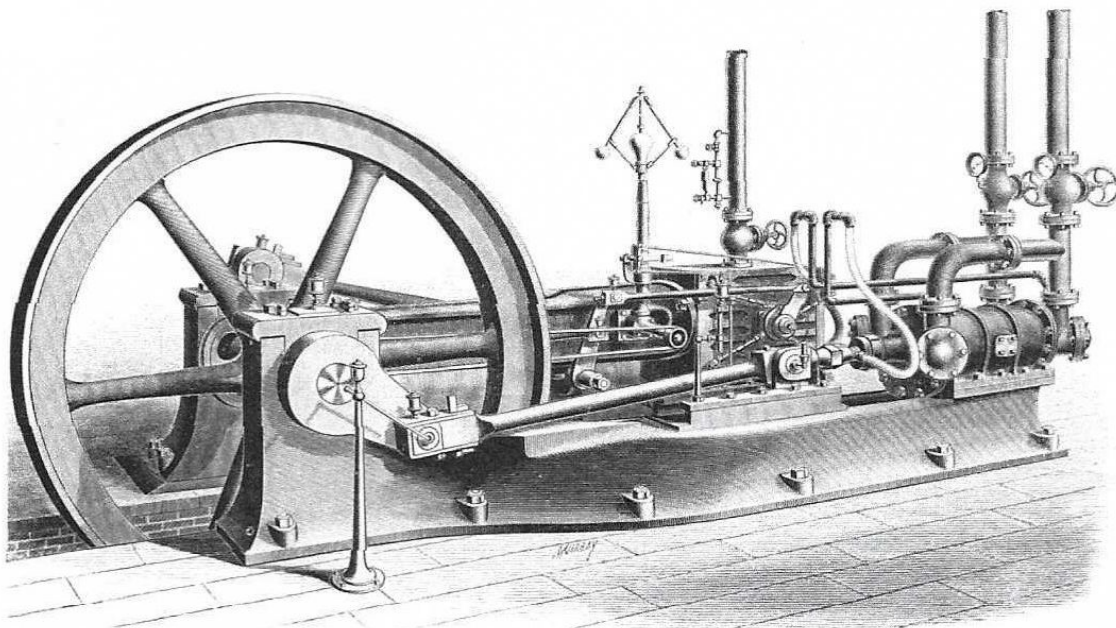
Pictet Machines use **Anhydrous Sulphurous Oxide**, a chemical noted for its low working pressure, is of itself a lubricant, and does not injure any of the metals; its low pressure is a guarantee against explosion.



NEW YORK BOARD OF FIRE UNDERWRITERS,
BUREAU OF SURVEYS

JAMES HARRISON, Supt.
Boreel Building, 115 Broadway, Room 37.

NEW YORK, January 24, 1891.
THE PICTET ARTIFICIAL ICE CO. (Limited), New York.
Dear Sirs: Your favor of the 22d inst. is at hand. In reply, the examination of our expert and his subsequent report were convincing that the article known as Anhydrous Sulphurous Oxide is a safe article for storage or shipment, its tendency being to extinguish rather than to cause fire.
Yours truly,
JAMES HARRISON, Supt.



Working Pressure from 50 to 75 lbs.

We guarantee **GREATER ECONOMY OF FUEL**, doing the same amount of work with less coal than any machine in the market.

FOR LIST OF REFERENCES AND FURTHER PARTICULARS, ADDRESS

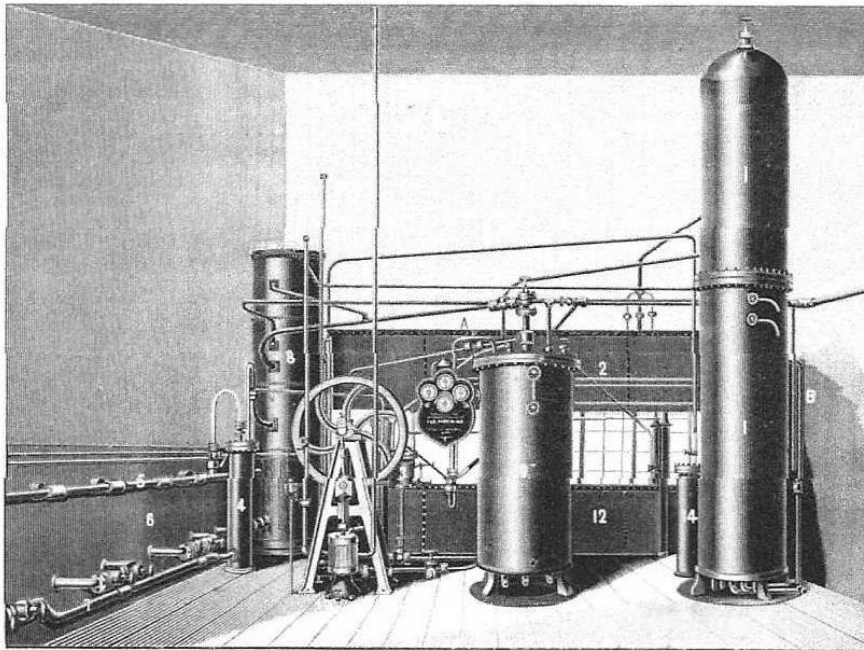
WHITEHILL ENGINE & PICTET ICE MACHINE CO.

WORKS: NEWBURGH, N. Y.

New York Office, 21 Cortlandt St., Room 6.

COLUMBUS IRON WORKS Absorption Ice Machine

IMPROVED



SUCCESSORS TO
H. D. STRATTON & CO.

Established 1853.
Incorporated 1856.

W. R. BROWN, President.
W. COOK, Superintendent.

Machines from 5 to 33 tons capacity per 24 hours; or larger if desired.

+ + +

94 Machines Built

and all in successful operation.

+ + +

More Ice Making Machines sold in the South than by any other establishment.

+ + +

No expensive building required. No pressure on machine when stopped.

+ + +

Send for price list and illustrated circular with location of machines.

+ + +

This establishment was the first to turn out a perfect and complete Ice Machine, and has been in the business 21 years, constantly manufacturing and improving, and are prepared to furnish the most reliable and economical machine in the market.

BUILT BY THE

COLUMBUS IRON WORKS CO., COLUMBUS, GA.

BUFFALO
REFRIGERATING
MACHINE CO.

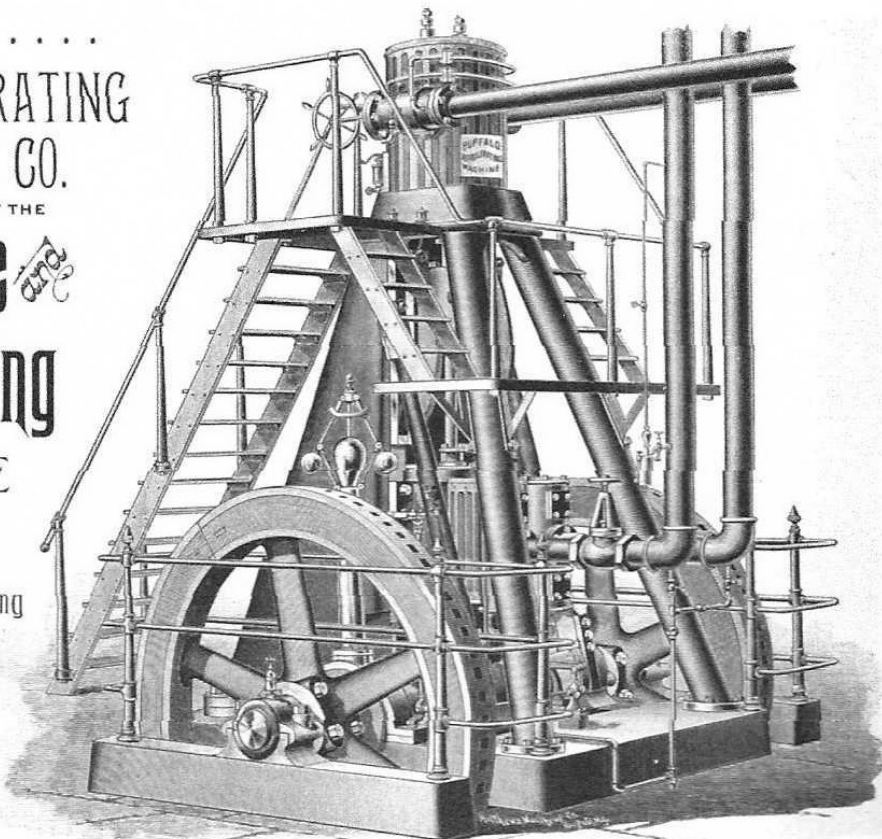
BUILDERS OF THE

Buffalo Ice
Refrigerating
MACHINE

For Ice Making and
Artificial Refrigerating

Full particulars, Estimates,
Illustrated Circular, contain-
ing list of machines in use,
etc., furnished upon appli-
cation.

Buffalo, N. Y.

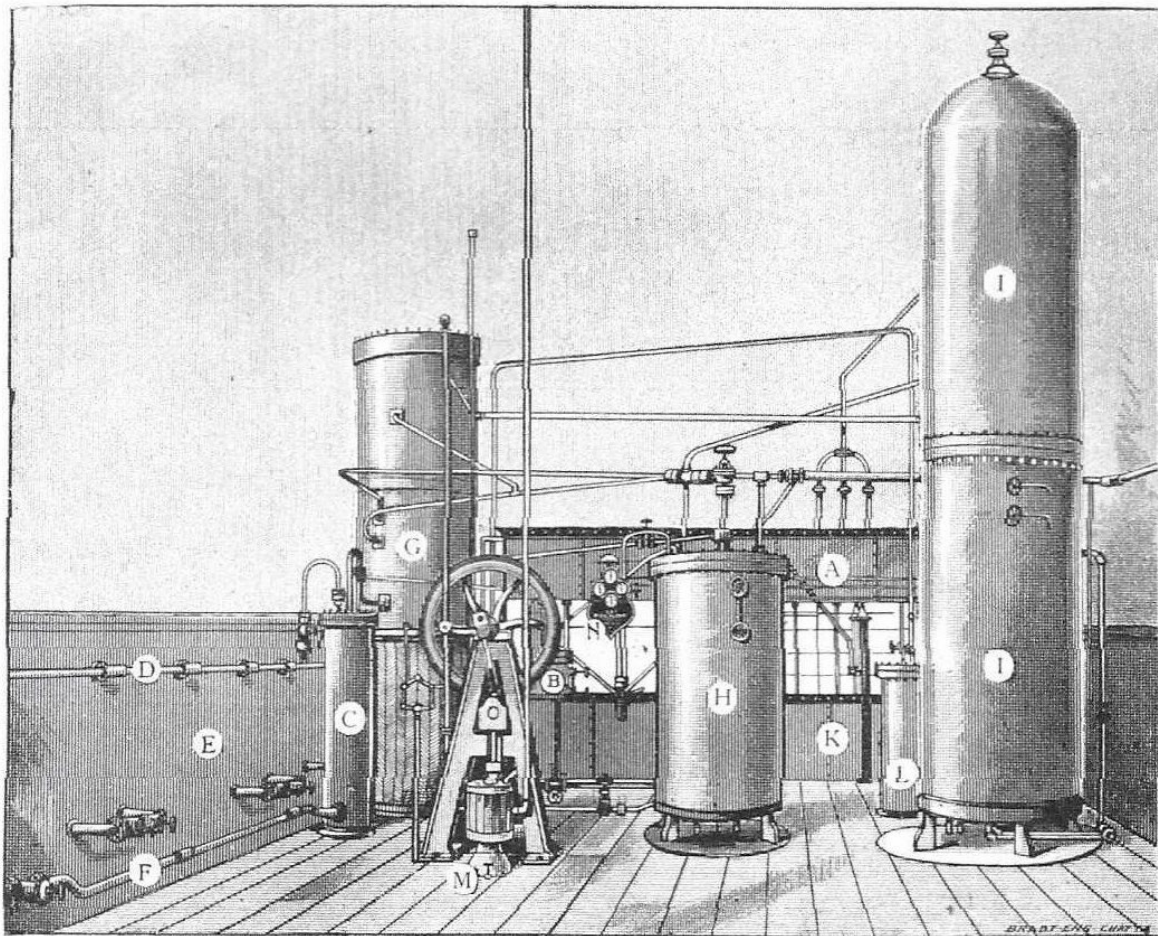


SOUTHERN ICE MACHINE CO.

SOLE OWNERS AND MANUFACTURERS OF

... The Latest Improved Absorption ...

ICE AND REFRIGERATING MACHINE.



∴ THE SOUTHERN ∴



The SOUTHERN ICE AND REFRIGERATING MACHINE is one of the best and has been acknowledged by the most experienced ice manufacturers to work more economical and produce ice cheaper and of a better quality than any other machine on the market to-day



ALL MACHINES NOW IN OPERATION ARE GIVING PERFECT SATISFACTION.



FOR ESTIMATES AND
FURTHER PARTICULARS
ADDRESS THE

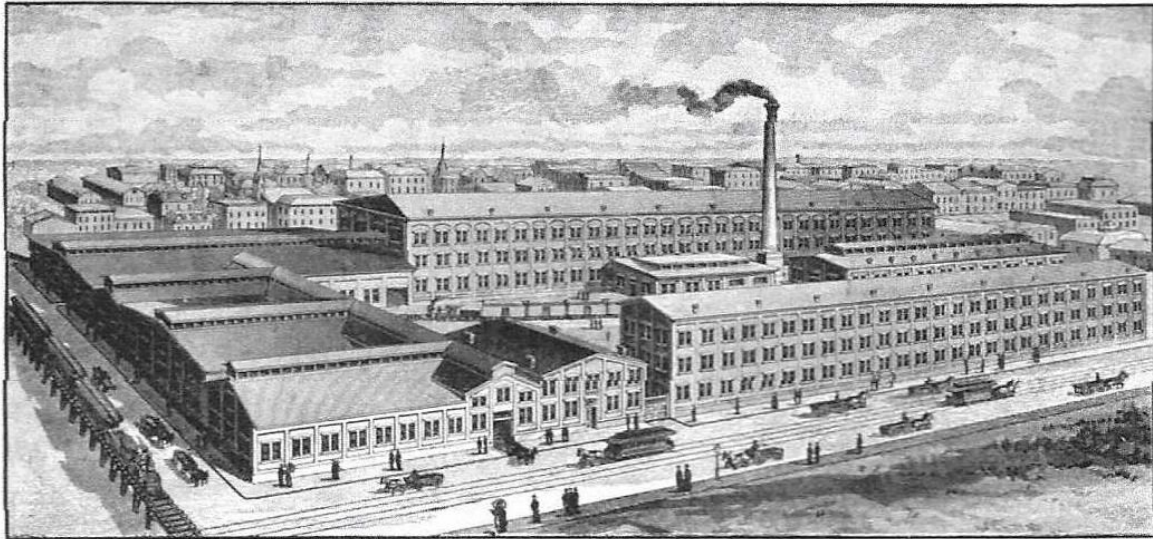
SOUTHERN ICE MACHINE CO.

CHATTANOOGA, TENN.

THIS ENGRAVING REPRESENTS THE WORKS OF THE

Blymyer Ice Machine Co., Cincinnati, Ohio.

Manufacturers of Ice and Refrigerating Machines, exclusively. The Absorption Machine, made by the Blymyer Ice Machine Co., is superior to any Compression Machine, either as a Refrigerating or Ice-Making Machine. It requires no steam engine or complex moving machinery. It saves 25 to 40 per cent of the fuel, and saves ammonia and labor. The cost of repairs is small, and the machine will outlast Compression Machines several times over. It is not necessary to buy these machines in pairs, as there is no danger of serious stoppage. These machines are **RADICALLY DIFFERENT** from all other Absorption Machines, and are in every way superior to them.



BELOW will be found a list of Ice-Making and Refrigerating Machines made by us. Every one of these machines has been in continuous use since erected, and is in use now. None have failed to fill their guarantees satisfactorily; none have been superseded by other machines. The entire capacity of our works having, up to the present time, been taken up with the manufacture of Ice-Making Machines, no agents have solicited orders for Refrigerators. Such orders as have been taken have been merely incidental. Having easily taken the lead in the Ice-Making Machine field, the manufacturers, with their enlarged capacity, will now enter the Refrigerator field (which is much the easier of the two in which to make a good record) in earnest, and respectfully solicit correspondence. Send for our catalogue.

ICE-MAKING MACHINES.

No.	Size.	NAME.	ADDRESS.
1	8 Ton.	Meridian Ice Mfg. Co.	Meridian, Miss.
1	10 "	Baton Rouge Ice Mfg. Co.	Baton Rouge, La.
1	15 "	Evansville Ice and Cold Storage Co.	Evansville, Ind.
1	5 "	A. Moresi	Jeanerette, La.
1	15 "	Lookout Ice and Cold Storage Co.	Chattanooga, Tenn.
1	10 "	Morris Ice Co.	Jackson, Miss.
1	15 "	Texarkana Ice Co.	Texarkana, Tex.
1	20 "	Lookout Ice & Cold Stor. Co. (2d Order)	Chattanooga, Tenn.
1	5 "	Gadsden Ice Co.	Gadsden, Ala.
1	6 "	Sheffield Ice Co.	Sheffield, Ala.
1	5 "	Decatur Ice Co.	Decatur, Ala.
1	30 "	Crystal Ice Co.	Wichita, Kan.
1	3 "	Deaton Ice Co.	Denton, Tex.
1	5 "	Van Buren Ice and Cold Co.	Van Buren, Ark.
1	5 "	Biloxi Artesian Ice Mfg. Co.	Biloxi, Miss.
1	25 "	Hutchinson Ice Mfg. Co.	Hutchinson, Kan.
1	12 "	Parkersburg Ice Co.	Parkersburg, W. Va.
1	30 "	Union Ice Co.	Denver, Col.
1	3 "	Dominick & Karston	West Point, Miss.
1	3 "	DeCoppet Ice Co.	Somerset, Ky.
1	35 "	Evansville Ice & Cold Stor. Co. (2d Order)	Evansville, Ind.
1	2 "	Van Horn & Chambers	Lebanon, Ohio.
1	4 "	John C. Webb	Demopolis, Ala.
1	12 "	Huntington Ice and Storage Co.	Huntington, W. Va.
1	15 "	Corryville Artificial Ice Co.	Cincinnati, Ohio.
1	3 "	Pinch, Miss.	Pinch, Miss.
1	30 "	Wheeling Ice and Storage Co.	Wheeling, W. Va.
1	20 "	El Payne Ice and Cold Storage Co.	El Payne, Ala.
1	10 "	Coronado Beach Co. (Hotel del Coronado)	San Diego, Cal.
1	1 "	Walter Aiken (Hamilton Hotel)	Hamilton, Bermuda
1	20 "	Decatur Cold Storage and Ice Co.	Decatur, Ill.
1	12 "	Marietta Ice Co.	Marietta, O.
1	30 "	Dayton Ice Mfg. & Cold Storage Co.	Dayton, O.
1	30 "	Zanesville Artificial Ice Co.	Zanesville, O.
1	35 "	Evansville Ice & Cold Stor. Co. (3d Order)	Evansville, Ind.
1	3 "	Conolly & Curtis	Columbus, Miss.
1	5 "	Lebanon Artificial Ice Co.	Lebanon, Ky.
1	5 "	Cynthiana Elec. Light & Power Co.	Cynthiana, Ky.
1	5 "	Grenada Cream & Cold Stor. & Ice Co.	Grenada, Miss.
1	15 "	Washington Ice Co.	Washington, Ind.
1	30 "	Wheeling Ice & Storage Co. (2d Order)	Wheeling, W. Va.
1	32 "	Consumers Ice Co.	San Francisco, Cal.
1	15 "	Shelbyville Artificial Ice Co.	Shelbyville, Ind.
1	30 "	Pueblo Distilled Water Ice and Cold Storage Co.	Pueblo, Col.
1	15 "	Skinner & Olson	Topeka, Kan.
1	25 "	Fort Wayne Artificial Ice Co.	Fort Wayne, Ind.
1	25 "	Evansville Ice & Cold Stor. Co. (4th Order)	Evansville, Ind.
1	25 "	Dayton Ice Mfg. & Cold Stor. Co. (2d Order)	Dayton, O.
1	15 "	Ashland Artificial Ice Co.	Ashland, Ky.
1	50 "	Corryville Artificial Ice Co. (2d Order)	Cincinnati, O.

* These machines were erected in 1890.

ICE-MAKING MACHINES.

No.	Size.	NAME.	ADDRESS.
1	8 Ton.	Gibson House	Cincinnati, O.
1	19 "	Palace Hotel	San Francisco, Cal.
1	30 "	The People's Ice Co.	Birmingham, Ala.
1	35 "	Citizens Ice Co.	Los Angeles, Cal.
1	20 "	Civil & White	Colorado Sprigs, Col.
1	30 "	Pueblo D.W. Ice & Cold Stor. Co. (2d Order)	Pueblo, Col.
1	60 "	Colorado Ice and Storage Co.	Denver, Col.
1	25 "	E. B. Cornell	Tampa, Fla.
1	5 "	Mr. H. G. Meemann	Bessemer, Ala.
1	20 "	Consumers Ice Co.	Vicksburg, Miss.
1	35 "	Artificial Ice and Storage Co.	Canton, O.
1	12 1/2 "	Rigid Ice Mfg. Co.	Joplin, Mo.
1	30 "	Crystal Ice Co.	Albuquerque, N. M.
1	15 "	Meridian Ice Co. (2d Order)	Meridian, Miss.
1	5 "	Dayton Ice Co.	Dayton, Tenn.
1	15 "	Decatur Ice Co. (2d Order)	Decatur, Ala.
1	12 1/2 "	The Ruddick Artificial Ice Co.	Columbus, Ind.
1	10 "	Mr. August Erath	New Iberia, La.
1	55 "	The Crystal Ice Mfg. & Cold Stor. Co.	Columbus, O.
1	12 "	Consumers Ice Co. (2d Order)	San Francisco, Cal.
1	15 "	Peru Ice and Cold Storage Co.	Peru, Ind.
1	55 "	The Crystal Ice Mfg. and Cold Stor. Co. (2d Order)	Columbus, O.
1	32 "	Lafayette Artificial Ice Co.	Lafayette, Ind.
1	50 "	R. T. McDonald & Judah Hart	New Orleans, La.
1	12 "	John Hoey (Hollywood Hotel)	Long Branch, N. J.
1	15 "	Bridgeport Electric and Ice Co.	Bridgeport, Ala.
1	5 "	Fleischman & Co.	Cincinnati, O.

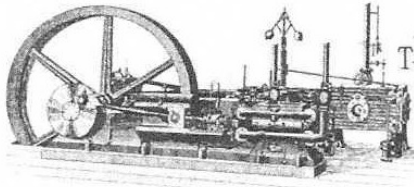
** These machines were erected in season 1891.

REFRIGERATING MACHINES.

No.	Size.	NAME.	ADDRESS.
2	50 Ton.	Louisiana Brewing Co.	New Orleans, La.
1	40 "	Toledo Brewing and Malting Co.	Toledo, O.
1	40 "	Hudepohl & Kotte Brewery	Cincinnati, O.
1	50 "	Savannah Brewing Co.	Savannah, Ga.
1	25 "	Schantz & Schwind (Brewery)	Dayton, O.
1	15 "	John Smith's Sons (Brewery)	Youngstown, O.
1	12 "	Christ Diehl (Brewery)	Defiance, O.
1	12 "	Genessee Oil Works	Buffalo, N. Y.
1	12 "	S. Davis, Jr. & Co. (Packers)	Cincinnati, O.
1	50 "	Occidental Packing & Provision Co.	Lincoln, Neb.
1	15 "	Thos. McEldown, Jr. (Cold Storage)	Pittsburgh, Pa.
1	15 "	Grocers' Supply Co. (Cold Storage)	Pittsburgh, Pa.
1	40 "	Adolph Coors (Golden Brewery)	Golden, Col.
1	20 "	F. Conrad (Brewery)	Anaheim, Cal.
1	25 "	The Sachs-Prudens Ale Co.	Dayton, O.

* These machines were erected in 1890.

THEO. VILTER, Pres't & Sup.
ALBER. WALLBER, Vice Pres't
WM. D. VILTER, Secy & Treas.



The **Weibel & Vilter Mfg. Co.**
Manufacturers of **CORLISS ENGINES,**
Machinery for Brewers and Bottlers.

ICE MAKING & REFRIGERATING MACHINERY

ICE-MAKING PLANTS

FOR BREWERIES, PACKING HOUSES,
CONFECTIONERIES,
COLD STORAGE HOUSES, ETC.

Direct Expansion or Brine System

MILWAUKEE, WIS.

Van Winkle Gin & Machinery Co.

E. VAN WINKLE, Pres't & Mgr.
J. WALLACE, Dir. & Secy.

MANUFACTURERS OF



THE KEELING ICE MACHINE
.. AUTOMATIC ..

FOR ICE MAKING, COLD STORAGE PLANTS, BREWERIES, PACKERS, ETC.

WRITE FOR ESTIMATES AND FURTHER INFORMATION.

VAN WINKLE GIN AND MACHINERY CO.

OFFICE, 210 MARIETTA STREET, ATLANTA, GA.

ICE MACHINES

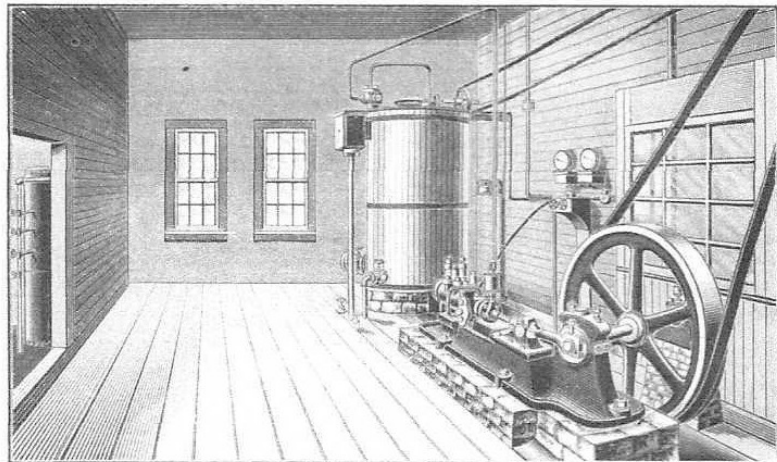
(WINDHAUSEN'S SYSTEM.)

AINSLIE, COCHRAN & CO.

LOUISVILLE, KY.

To the Trade

We have recently secured the sole right to manufacture and sell WINDHAUSEN'S CARBONIC ANHYDRIDE ICE AND REFRIGERATING MACHINES in the United States. These machines have gained a wide reputation on the continent for their simplicity, durability and economical running. They have been indorsed by the German government, an eighty (80) ton machine having been placed in the powder works at Spandan. They are also fast superseding other systems in the prominent breweries of Germany, nearly 200 being in operation already. They are the only machines using carbonic anhydride which has such a great range of expansion, produces such intense cold, and is cheap, odorless and easily obtained.



The above cut represents the No. 2 Machine at the Terre Haute House, Terre Haute, Ind.

WRITE TO US FOR FURTHER PARTICULARS.

AINSLIE, COCHRAN & CO.



REFRIGERATING PLANTS

COLUMBUS IRON WORKS

IMPROVED

Absorption Ice Machine

SUCCESSORS TO
H. D. STRATTON & CO.

Established 1853.
Incorporated 1856.

W. R. BROWN, President.
W. COOK, Superintendent.

Machines from 5 to 33 tons capacity per 24 hours, or larger if desired.

+++

94 Machines Built

and all in successful operation.

+++

More Ice Making Machines sold in the South than by any other establishment.

+++

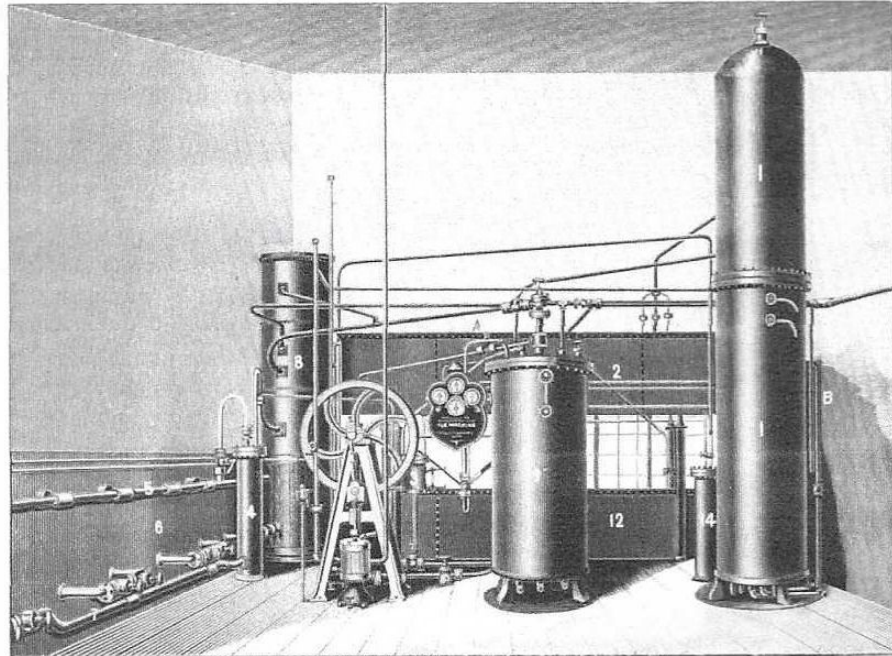
No expensive building required. No pressure on machine when stopped.

+++

Send for price list and illustrated circular with location of machines.

+++

This establishment was the first to turn out a perfect and complete Ice Machine, and has been in the business 21 years, constantly manufacturing and improving, and are prepared to furnish the most reliable and economical machine in the market.



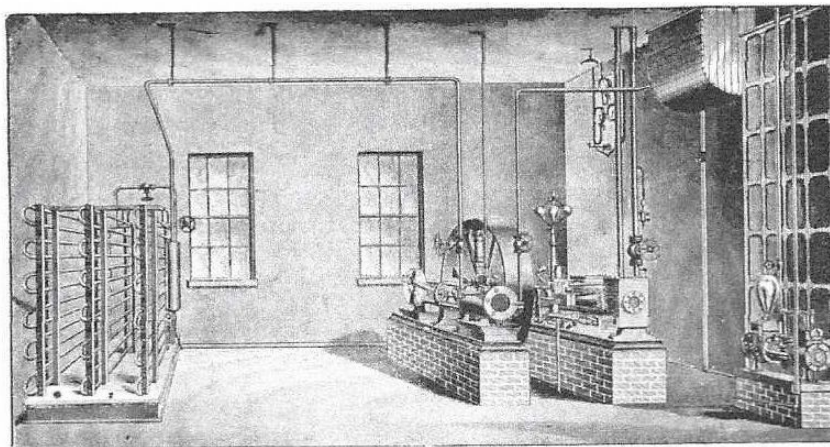
BUILT BY THE . . .

COLUMBUS IRON WORKS CO. COLUMBUS, GA.

The American Ice Machine Company

SOLE OWNERS OF THE
KLINE AND WINKLER AUTOMATIC

REFRIGERATING AND
ICE MAKING MACHINE SYSTEM



Simplicity of Construction,
Durability,
Efficiency,
Economy.



ICE-MAKING OR
REFRIGERATING
PLANTS

From One Ton to Two Hundred
Tons daily capacity.

OVER 100 MACHINES IN
OPERATION.

1. The simplicity of construction. Every part is simple and complete, is exposed to full view, easily got at and can be readily understood and handled by an engineer of ordinary intelligence.
2. The freezing process is completely automatic (WHICH NO OTHER FREEZING SYSTEM POSSESSES), through the action of our patent evaporation pressure regulator; it saves valuable working time. Every part is independent of the other, and can be overhauled or replaced without stopping the whole machine.
3. That ice is manufactured from distilled water, which is free from disease-producing germs, such as abound in ice frozen on rivers and ponds, is chemically pure, and is infinitely preferable to the natural product.

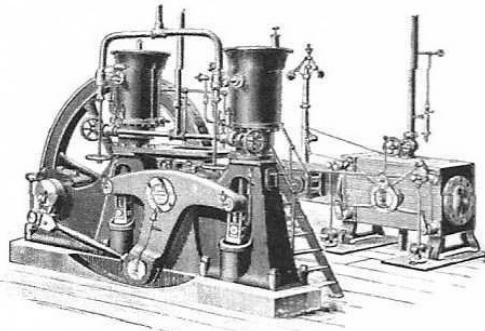
4. Our Patent Gas Condenser enables us to work with warmer water and less water than any other machine, as the water is applied DIRECT on the hot pipe without waste or slop on the surroundings.
5. We can make more ice or cold air than any other machine, WITH THE SAME AMOUNT OF FUEL. Experts have placed the difference in our favor at not less than 25 degrees.
6. The Condensers and Freezers will not stop on account of sediment. They never require cleaning. They clean themselves while at work without separate attachment. Our freezing coils are so constructed that no pipe joint is used inside of the tank, and each coil is independent of the other. Each coil section can be taken out while working without interference with the other sections.

Company's Offices, 35 Broadway, Rooms 72, 73, 74 and 75, New York.

THE HERCULES ICE MAKING AND REFRIGERATING MACHINE

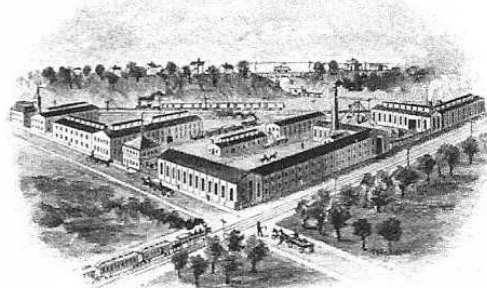
(REFRIGERANT: ANHYDROUS AMMONIA.)

FOR BREWERIES, PACKING HOUSES,
COLD STORAGE AND ICE MAKING.

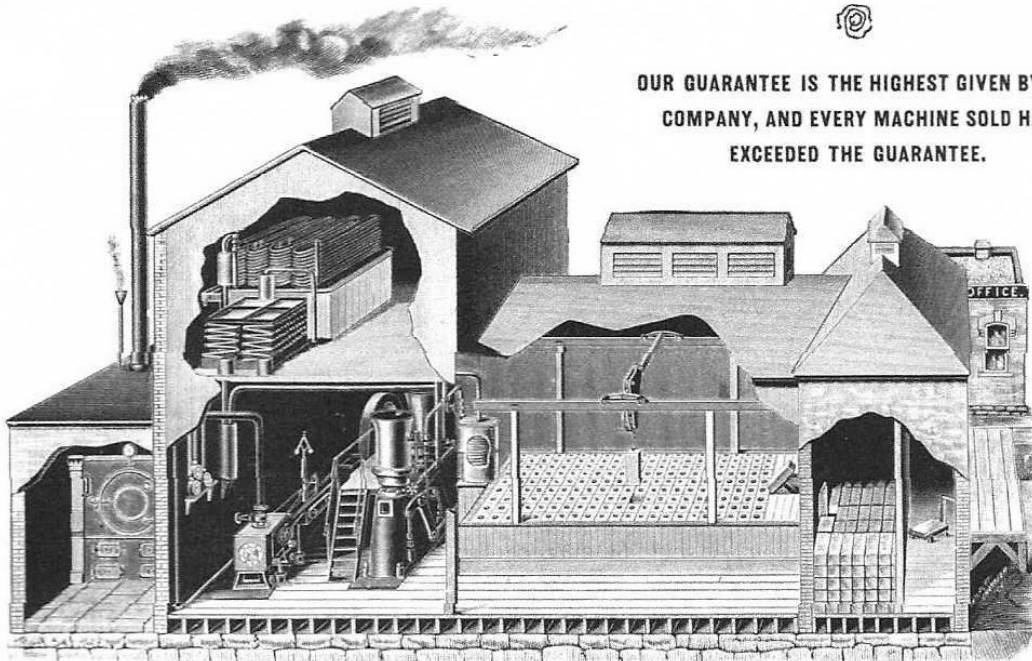


THE HERCULES ICE MACHINE.

The Hercules Ice Machine is the most compact, most economical, most easily handled, well constructed, and thoroughly satisfactory machine in the market.



HERCULES WORKS, AURORA, ILL.



THE HERCULES MODEL ICE PLANT.

OUR GUARANTEE IS THE HIGHEST GIVEN BY ANY
COMPANY, AND EVERY MACHINE SOLD HAS
EXCEEDED THE GUARANTEE.

A. NUNNING BREWING CO.
ST. JOSEPH, MO.

HERCULES IRON WORKS,
CHICAGO, ILL. October 13, 1891.
In reply to your inquiry relating to the 40-ton Refrigerator placed by you in our brewery, I am pleased to say the machine has more than met our expectations, and your guarantee fully demonstrating its worth and reliability. It has the past year run continuously night and day, and has not occasioned any stop for repairs of any kind, and we are greatly pleased to add our name to the long list of testimonials which the Hercules bears.
Yours respectfully,
AUG. NUNNING, President.

MEADERS & OSGOOD,
NASHVILLE, TENN.

HERCULES IRON WORKS,
CHICAGO, ILL. July 29, 1891.
Our 25-ton Ice Machine purchased of you, after one month continuous operation has given such complete satisfaction that we do not wish a test of its abilities to perform the work guaranteed. It is now making with ease twenty-five tons daily of the finest ice we have ever seen, besides refrigerating our storage ice house. Congratulations upon its good work, and wishing you the success you deserve, we are, sirs,
Yours respectfully,
MEADERS & OSGOOD.

THE HERCULES BLUE BOOK No. 1, FULL OF HELPFUL AND INTERESTING INFORMATION,
IS NOW IN PRESS, AND WILL BE SENT FREE TO INTENDING PURCHASERS.

NEW YORK OFFICE,
150 BROADWAY.

THE HERCULES IRON WORKS,

WORKS,
AURORA, ILL.

Room 502 Owings Building, Dearborn and Adams Sts., CHICAGO.



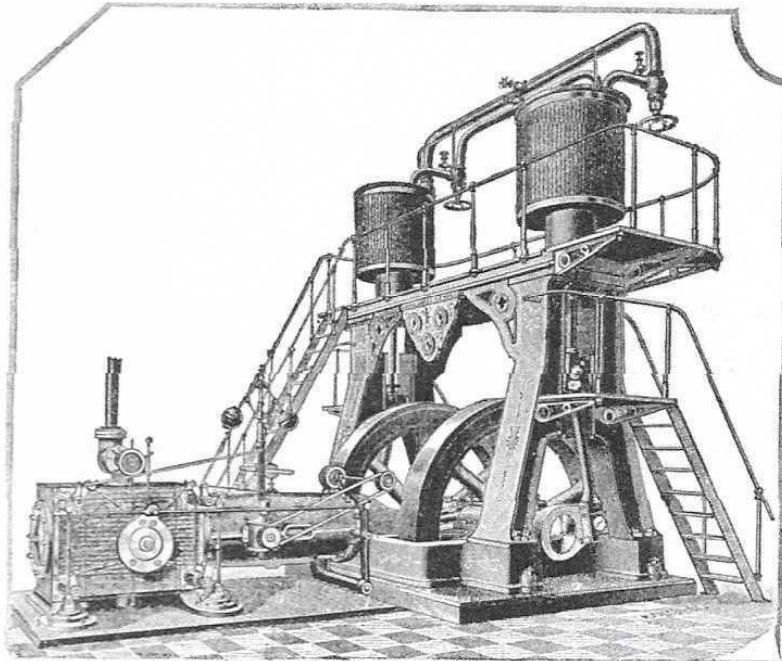
CONSOLIDATED ICE MACHINES

FOR several years past we have been engaged in building Consolidated Ice Machines, and many of the very best running in the United States, at the present time, are of our manufacture. Since the original Company have failed, we have concluded to continue this business, and hereafter will manufacture, to order, any kind or style of a Consolidated Ice Machine desired. We will also contract for complete plants, and will put in either direct or brine circulation, as may be desired. We make a specialty of furnishing duplicate parts, and keep them always in stock, and can furnish on short orders any detail of these machines. We manufacture special steel valves and white metal rings designed especially for ammonia work.

We guarantee protection against any and all claims or pretended claims for patents on these machines.

These machines are known throughout the United States for the excellence of their construction, and their superiority to all others in use. They need no better recommendation than their own work. All the material and workmanship on them is of the finest quality.

We have the original drawings and patterns in our possession, and can furnish a better machine for less money than can be built elsewhere. We also manufacture and keep on hand to supply the trade the finest steel fittings and steel valves made in the world, designed especially for ammonia work, and will be pleased to quote prices to purchasers.



NOTE.—It has come to our knowledge that parties owning or claiming to own a bogus patent, issued to one James Boyle in 1876, for an ammonia compressor, have been putting in circulation notices that the pumps used on the Consolidated Refrigerating Machines is an infringement on said patent, and that they will bring suit against any one using them; therefore we hereby guarantee to all persons purchasing one of our machines protection against said fraudulent claims, and request all persons receiving one of such notices to forward the same to us, with a statement setting forth whether they have been influenced not to buy a Consolidated Machine thereby. We also give the parties setting up these claims public notice that we will bring suit against them for damage to our business by them, by misrepresentation and fraud.

JOHN FEATHERSTONE'S SONS,

2-36 Front Street, Corner North Halsted,

CHICAGO.

J. & E. HALL'S REFRIGERATING MACHINES

270 MACHINES FITTED ON BOARD SHIP.

35 SHIPS NOW BEING FITTED WITH MACHINES

On their Patent Carbonic Anhydride System.

700 MACHINES SUPPLIED,

All of which were manufactured in their works at Dartford, Kent.

100,000 Tons of Meat imported annually with HALL'S Refrigerating Machines.

Contractors for Refrigerating Installations to H.M. War Department, H.M. Ordnance Department, H.M. Council of India, H.M. Niger Coast Protectorate, the Russian Government, South Australian, Queensland, Victoria, Western Australian Governments, etc.



J. & E. HALL, LTD., 23, St. Swithin's Lane, London, and Dartford, Kent.

THE FRED W. WOLF CO.

SOLE
MANUFACTURERS
OF THE

LINDE Ice and Refrigerating Machine

EASTERN OFFICE,

Room 600, 18 Broadway, New York.

SOUTHEASTERN OFFICE,

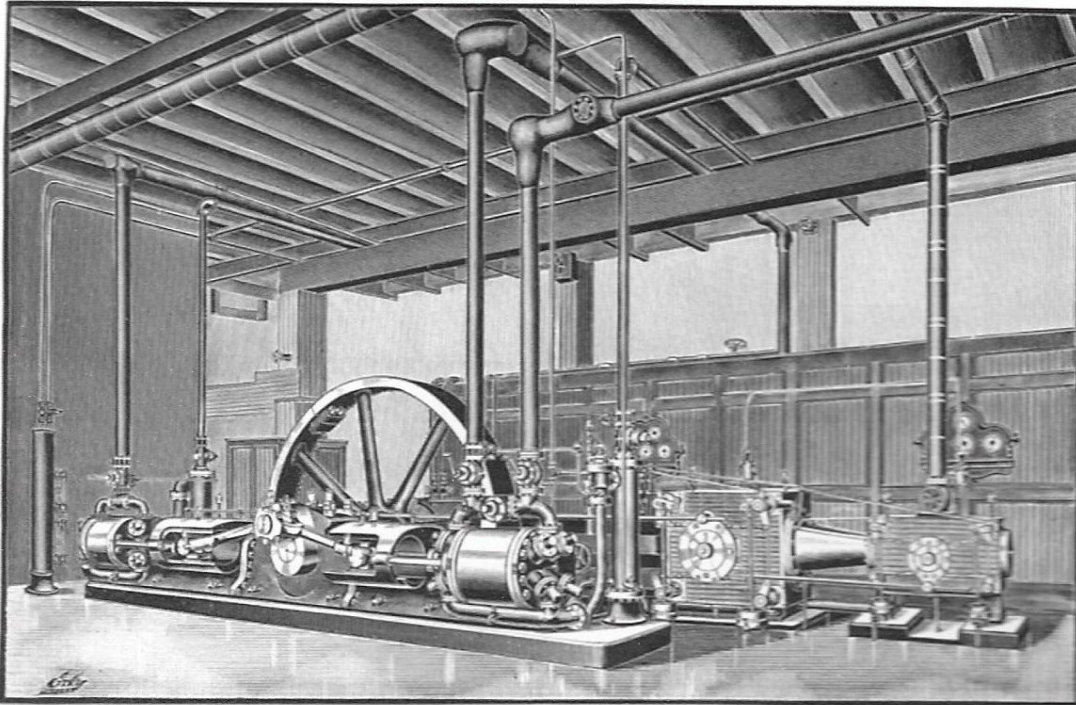
E. E. EAGAN, 810 Equitable Building, Atlanta, Ga.

SOUTHWESTERN OFFICE,

E. P. MADDOX, Fort Worth, Tex.

OFFICE, 139, 141 AND 143 REES ST.

CHICAGO, ILL., U. S. A.



200-TON LINDE PLANT.

FOR _____

Ice Factories, Cold Storage Houses
Breweries and Packing Houses

Over 2,500 Machines in Actual Operation.
Machines Built from 10 to 200 Tons Daily Capacity.
The Amount of Melting Ice which these Machines
represent DAILY is 77,357 tons, or 28,235,305 tons
PER YEAR.

THE PONTIFEX ICE MACHINE COMPANY,

ROBERT HEWITT, President, 512 West Street, NEW YORK CITY,

ARE PREPARED TO CONTRACT FOR

Ice and Refrigerating Plants of any magnitude, under the Reece, Stanley, Pontifex-Wood and Hendrick systems (Refrigerant, Aqua Ammonia) as constructed under special arrangement with this Company by

THE HENDRICK MANUFACTURING COMPANY, LIMITED, CARBONDALE, PA.

The **PONTIFEX-HENDRICK** Ice and Refrigerating Machine is the result of more than fifteen years' experience in such work on the part of Messrs. Pontifex and Wood, Farrington Works, London, the original builders of the machine in Great Britain and its Colonies, and of the Pontifex Ice Machine Company, American builders, who have somewhat modified the machine to better adapt it for American refrigerating practice. A **Simple, Strong, Durable, Reliable, Economical and Efficient Machine**, particularly adapted for low temperature work, such as the refrigeration of Paraffine Works, Oil Refineries, Freezing and Cold Storage Warehouses, Fish Freezing Houses, Chemical Works, etc. In successful use in **47 Ice Factories** in tropical countries. Over **350** machines in successful operation in Freezing and Cold Storage Warehouses, Breweries, Distilleries, Wineries, Packing Houses, Abattoirs, Dressed Beef Houses and Markets, Dairies and Creameries, Butterine Factories, Yeast Factories, Chocolate and Candy Factories, Hotels and Restaurants, Paraffine and Cotton Seed Oil Refineries, Lard Refineries, Powder and Dynamite Mills. Machines built from $\frac{1}{2}$ to **100** tons daily refrigerating capacity. Machines guaranteed for material, workmanship and capacity under test. For descriptive circulars, references, detailed specifications, apply either to

THE PONTIFEX ICE MACHINE COMPANY,
512 West Street, NEW YORK.

OR THE HENDRICK MANUFACTURING CO., Ltd.
CARBONDALE, PA.

CASTLE ICE MACHINERY CO. MANUFACTURERS OF INDIANAPOLIS, IND.

Absorption Ice and Refrigerating Machines

For all purposes, containing latest improvements, making **REGULAR** that which before was **NOT** regular. Our 15-ton Absorber contains over 6,000 square feet of absorbing surfaces, enabling the temperature of absorption to vary from 50 to 110 deg. Fahr. without affecting operations. One foundation for all machinery. Small water consumption. Economical and positive. The machines in use: We refer to Seymour Ice Co. (Ind.) having machine with all improvements.

MAKE YOUR EXHAUST STEAM PRODUCE SILVER DOLLARS

By using it through our New Designed Machine with improvements for Refrigerating, Cold Storage or Ice Making, from 50 lbs. to 3 tons. Using either live or exhaust steam. With non-explosive retort. Automatic. Can be arranged to operate 12 hours each day and perform excellent duty. No extra help required.

CIRCULARS AND ESTIMATES ON APPLICATION.

THE CASE — REFRIGERATING MACHINE CO.

BUILDERS OF ICE AND

Refrigerating

..MACHINES..

FOR ICE MAKING
AND ARTIFICIAL
REFRIGERATING

Full particulars, Estimates, Illustrated Circular, containing list of machines in use, etc., furnished upon application.

BUFFALO, N. Y.

